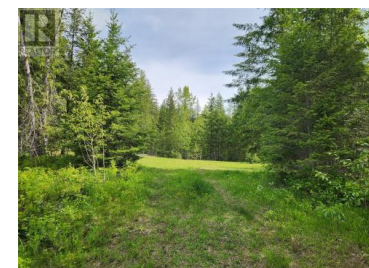
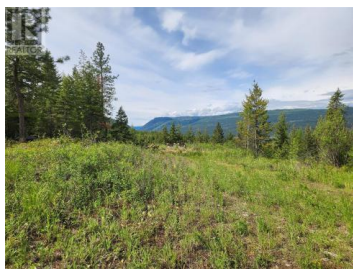




712 Grange Road Enderby British Columbia

Enderby / Grindrod

\$649,000



Escape to over 14 acres of unparalleled privacy, surrounded by nature's tranquility. This expansive property features winding trails that invite exploration and adventure right from your doorstep. Bordering pristine crown land, it offers a rare sense of seclusion and untouched beauty. A powered shop provides space for hobbies, projects, or outdoor gear storage, while the property's water source, fed by Ferguson Creek, adds to its self-sufficient appeal. Ideal for outdoor enthusiasts, this sanctuary is a haven for wildlife, offering endless opportunities to connect with nature. Despite its peaceful setting, the property is just 20 minutes from Salmon Arm and Enderby, striking the perfect balance between solitude and convenience. Nearby Gardom Lake offers opportunities for recreation, and the shop presents an ideal space to create your dream home. Embrace the serenity of rural living—make this breathtaking retreat your own. (id:6769)

Susi During

Royal LePage Access Real Estate

Phone: (250) 803-8120

<http://www.salmonarmproperties.com/>



RE/MAX Kelowna
100-1553 Harvey Avenue
Kelowna, BC,
Canada