

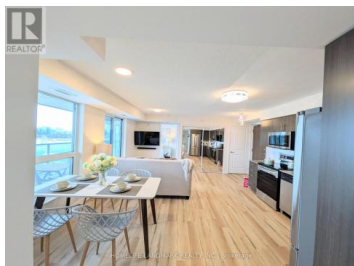
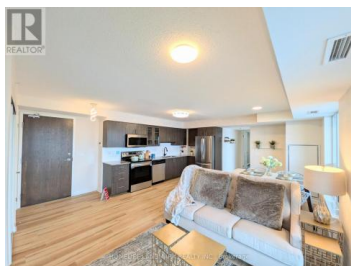


## 75 Norman Bethune Avenue 718 Richmond Hill Beaver Creek Business Park Ontario

Beaver Creek Business Park

**\$668,000**

HOMELIFE LANDMARK REALTY INC. Brokerage



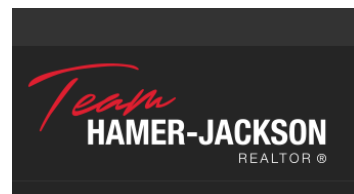
Bright & Sunny Corner, Wide Style 2 Bedroom 2 Bath Condo In A Prime Richmond Hill Location. Maximizing 894 Sq Ft With No Wasted Space, Enjoy A Split, Open Concept Layout And A Huge Balcony With Access From Living Rm & Both Bedrooms Featuring Unobstructed E/W/& N Exposures. Primary Ensuite Has Tub & Sep Shower. Amenities Include 24Hr Concierge/Security, Indoor Pool, Gym, Sauna, Party Room, Visitor Parking. One Parking. One Locker. A Quality, Quiet Building Tucked Away From, But Accessible To, Hwy 7. Steps To Transit, Shopping, Schools, Restaurants & Entertainment. Minutes To Hwy 404 & 407. (id:6769)

**RUDY CHUN YU HUNG**

HOMELIFE LANDMARK REALTY INC.

Phone: (647) 868-0584

<http://www.rudyhung.ca/>



**RE/MAX Kelowna**  
100-1553 Harvey Avenue  
Kelowna, BC,  
Canada