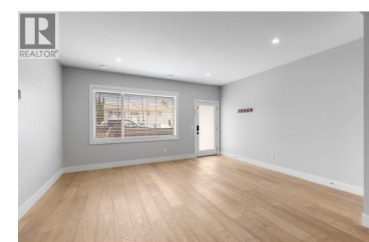
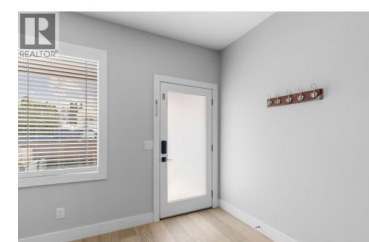
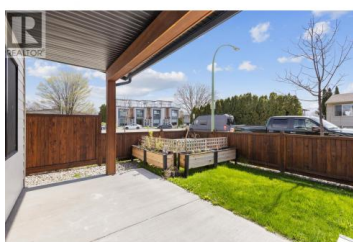




728 Coopland Crescent Kelowna British Columbia

Kelowna South

\$799,900



Welcome home! To this private & peaceful 3-Bedroom home in Kelowna South. Enjoy the serenity of this completely detached home in a small 4-unit strata complex, offering a quiet retreat for you and your family. With 3 spacious bedrooms, 3 bathrooms, and ample natural light, this property is perfect for families or individuals seeking a peaceful lifestyle, yet close to all that Kelowna has to offer. This 5 year new home already has new improvements, including matching engineered hardwood floors upstairs, new wool carpet on staircase and it's been freshly painted so you can move right in. The prime location is close to top-rated schools: Raymer Elementary, Kelowna Secondary, and Okanagan College. You can stroll to nearby parks like Osprey Park and Kinsmen Park and the lakefront beaches to enjoy outdoor recreation and relaxation. Eclectic Pandosy Village and downtown Kelowna provide a vibrant mix of shops, restaurants, and services. Close to hospital and provides convenient access to major roads and highways. Call your REALTOR® to set up a viewing and make this home yours. Vacant, easy to show and fast move possible. (id:6769)

Clifford Armstrong

Sutton Group-West Coast Realty (Surrey/24)

Phone: (604) 961-5160

<http://www.cliffandyler.com/>



RE/MAX Kelowna
100-1553 Harvey Avenue
Kelowna, BC,
Canada

