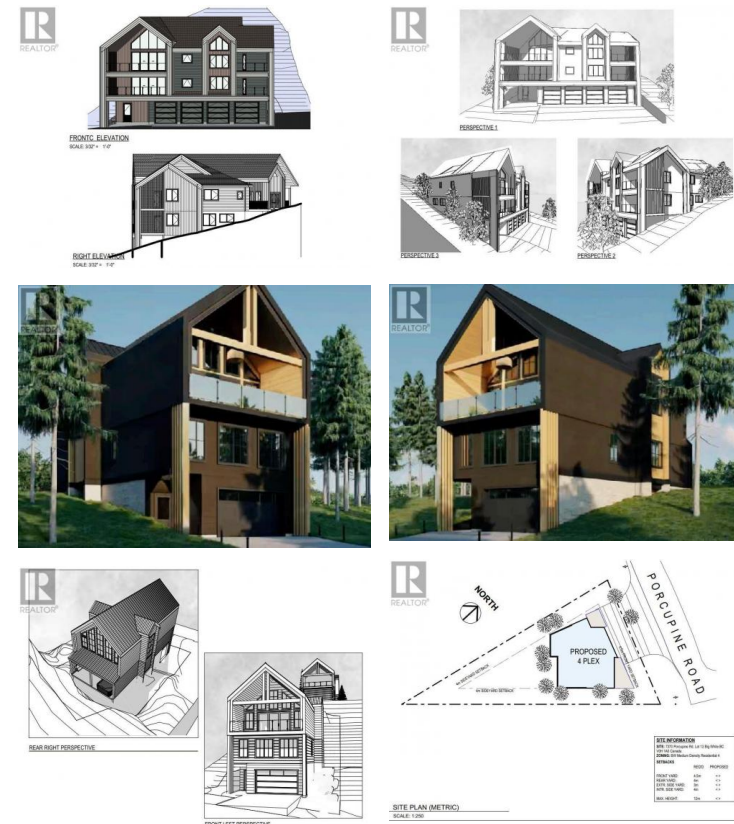




## 7370 Porcupine Road Big White British Columbia

Big White

**\$749,900**



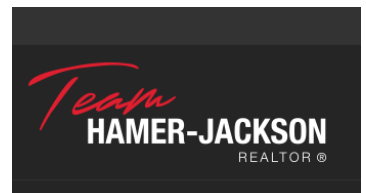
Don't miss out on this extraordinary chance to own a .25 acre lot nestled in the heart of Big White! Positioned perfectly within the VILLAGE, you can easily walk or ski to any destination while relishing in breathtaking views. This opportunity is truly rare—a once-in-a-lifetime moment to construct the chalet you've always envisioned or develop an exceptional luxury fourplex. R4 zoning opens up a plethora of possibilities and potential for your investment. Plans are available for purchase, and if acquired, the accompanying builder can bring your vision to life THIS YEAR! Imagine skiing this winter in your very own dream property at Big White Ski Resort. Seize the moment and embrace the outdoors by living where you play! Exempt from Foreign Buyer Ban, Foreign buyers tax, speculation tax, empty home tax, and short term rental ban. (id:6769)

### Joan Wolf

Sotheby's International Realty Canada

Phone: (778) 231-0308

<http://www.joanwolf.ca/>



**RE/MAX Kelowna**  
 100-1553 Harvey Avenue  
 Kelowna, BC,  
 Canada