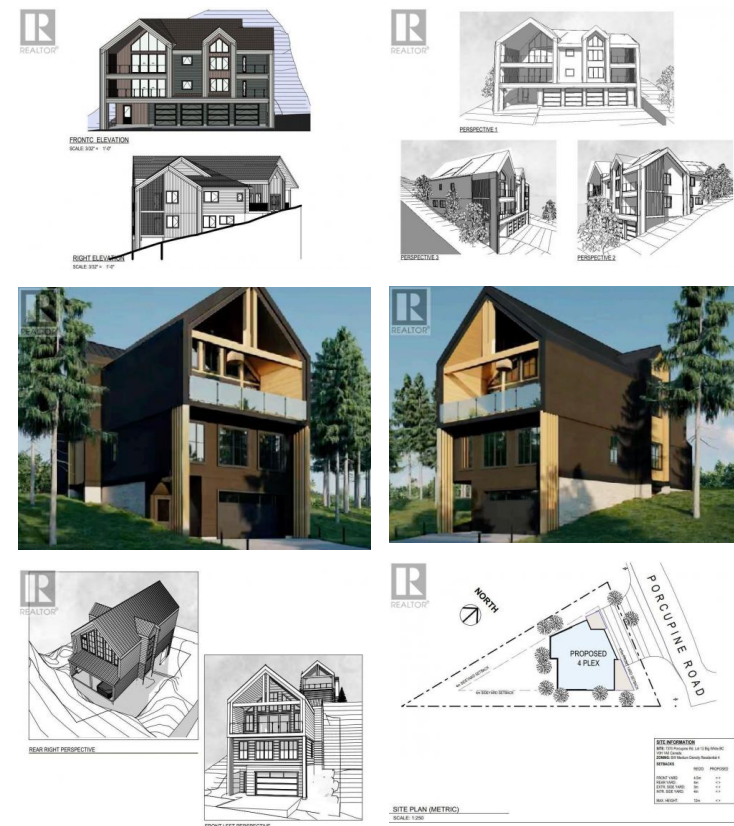




7370 Porcupine Road Big White British Columbia

Big White

\$699,000



Don't miss out on this extraordinary chance to own a .25 acre lot nestled in the heart of Big White! Positioned perfectly within the VILLAGE, you can easily walk or ski to any destination while relishing in breathtaking views. This opportunity is truly rare—a once-in-a-lifetime moment to construct the chalet you've always envisioned or develop an exceptional luxury fourplex. R4 zoning opens up a plethora of possibilities and potential for your investment. Plans are available for purchase, and if acquired, the accompanying builder can bring your vision to life. Seize the moment and embrace the outdoors by living where you play! With direct flights from cities like Los Angeles, Toronto, and Montreal, and just an hour from YLW, Big White is more accessible than ever. Known for some of the best snow in North America, this resort offers a winter wonderland experience. Best of all, this property is fully exempt from the Foreign Buyer Ban, Foreign Buyers Tax, Speculation Tax, Empty Home Tax, and Short-Term Rental Ban, providing a rare opportunity for international buyers. LIVE WHERE YOU PLAY! (id:6769)

Joan Wolf

Sotheby's International Realty Canada

Phone: (778) 231-0308

<http://www.joanwolf.ca/>



RE/MAX Kelowna
100-1553 Harvey Avenue
Kelowna, BC,
Canada

