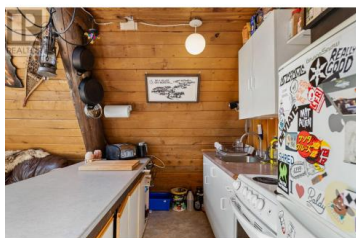
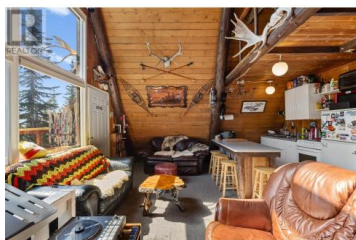


7440 Porcupine Road Kelowna British Columbia

Big White

\$849,900



Retro A-Frame Vibes | Sleep 7+ | Mini Arcade | Ski-In Access | Future Development Potential ----- Stop the search, mountain seekers -- this is the ultimate alpine throwback pad you didn't know you needed. This original A-frame chalet is bursting with 90s ski hill energy, just steps the village. This place isn't just rare -- it's legendary and packed with lore. There's room for your whole crew (and then some). Plus, there's a mini arcade for apres sessions that go late, fueled by pizza, powder stories, and high scores. And yeah -- it's got private ski-in access. We're talking bonus laps before breakfast.

HIGHLIGHTS: Original A-Frame Design - Peak 90s mountain radness Bed space - Sleeps the whole squad comfortably, Mini Arcade - Press start on apres greatness, Propane Central Air - Rustic meets modern, Wifi controlled, Chill in style, year-round, Wood-Fired Hot Tub - Soak sessions with a view, Private Ski-In Trail - More pow turns, fewer lift lines, Big Deck + Wood Storage - Built for BBQs and bonfires, Steps from the Village - Eats, shops, and apres within walking distance, Rental Powerhouse - High-demand location with serious ROI as an Airbnb, Future Development Potential - Hold and ride the wave to an additional cabin above off the run. This is a blast from the past with all the modern perks. Whether you're hosting friends, renting it out, or reliving the golden age of s...



RE/MAX Kelowna
100-1553 Harvey Avenue
Kelowna, BC,
Canada

John Kinloch

Royal LePage Kelowna

Phone: (250) 215-4595

<http://www.johnkinloch.com/>

