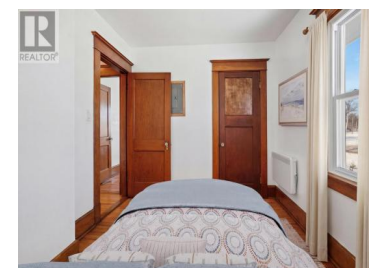




7481 Trans Canada Highway Vernon Bridge Prince Edward Island

Vernon Bridge

\$649,900



Set on 1.25 acres along the banks of the Vernon River, this restored historic American Foursquare is a rare waterfront residence in the heart of Eastern Prince Edward Island, ideally positioned between Charlottetown and Montague. The setting is calm and expansive, with the river as a constant presence beyond the home. The restoration has been approached with care and restraint, preserving what gives the property its lasting character: original hardwood and pine floors, rich unpainted natural wood trim, and the timeless proportions that define this classic architectural form. A covered front entry introduces generous principal rooms, including a main-level powder room, a dedicated office or study, and elegant spaces designed for both gathering and quiet everyday living. At the centre, a beautifully appointed kitchen opens to a waterview deck where mornings begin over the river and evenings settle into stillness. The second level offers four bedrooms, including a serene primary suite overlooking the water, complete with a freestanding tub and separate shower, as well as a full guest bathroom. Above, the finished attic provides an inspired bonus level, a light-filled retreat for creative work, reading, studio space, or play. The finished lower level expands the home dramatically with a huge living room, two additional bedrooms, a versatile flex room ideal for a gym or storage, ...



RE/MAX Kelowna
100-1553 Harvey Avenue
Kelowna, BC,
Canada

Anthony Delodder

ROYAL LEPAGE PRINCE EDWARD REALTY

Phone: (902) 218-6700

