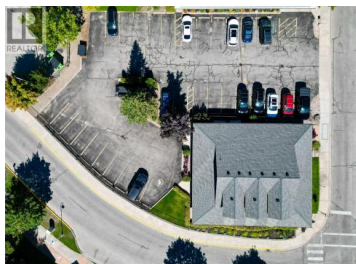




751 Marine Park Drive Salmon Arm British Columbia

NE Salmon Arm

\$6,000



3,120 ft² of versatile space. A variety of potential uses, currently set up with 12 offices/workspaces with the ability to sublet 3 private offices + 1 bathroom in a self-contained space with separate entrance. Large reception and storage/file area, 11 dedicated on-site parking stalls. Recently upgraded interior: fresh paint and new flooring and other upgrades (within 6 years). Excellent location with easy access to downtown and waterfront area. (id:6769)

Craig Shantz

RE/MAX Shuswap Realty

Phone: (250) 832-7051

<http://craigshantz.com/>



RE/MAX Kelowna
100-1553 Harvey Avenue
Kelowna, BC,
Canada