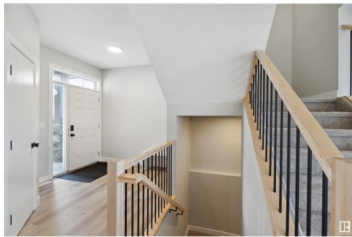
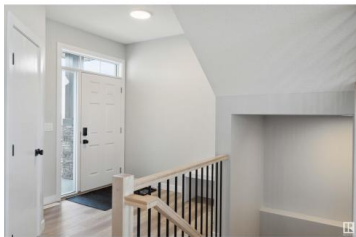


## Gibbons Alberta

Gibbons

# \$599,000



Pre-Sale Available! Welcome to Model LINCOLN ! This 1,874 sq. ft. 2-story home will be ready to enjoy on/or before Christmas in the beautiful Heartland Meadows community of Gibbons. Arrive on time to choose your finishes, including exterior color, flooring, cabinets, and light fixtures. The home will feature a side entrance , a triple car garage, and an EV charging station outlet . Measurements are based on the builder's plan. Pictures are based on a previous build, but you can see a live product in a nearby municipality. Some pictures are virtually staged (id:6769)

### Carl Rivest-Marier

Royal LePage Premier Real Estate

Phone: (780) 999-1894



RE/MAX Kelowna  
100-1553 Harvey Avenue  
Kelowna, BC,  
Canada