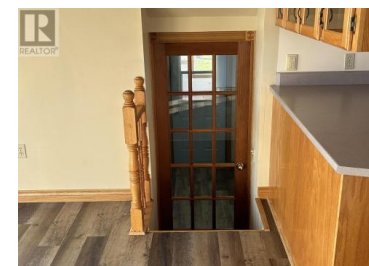




7670 Trans Canada Highway Vernon Bridge Prince Edward Island

Vernon Bridge

\$385,000

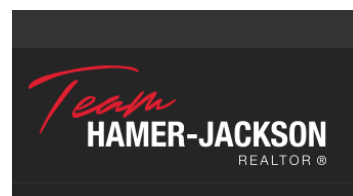


MOVE IN READY! Welcome to Vernon Bridge and this lovely split entry home, located only 13 minutes from Stratford and 18 minutes away from Charlottetown. It features 3 bedrooms and 2 full baths. Enjoy country living on this large lot, with ample room for your green thumb adding a vegetable garden in the back yard if you wish. Gather friends and family in the living room while you prepare your favorite meals in the kitchen, easily serve meals in the separate dining area. The Mud room off the attached and heated garage features laundry. The lower level features a well sized Family or Gaming room that is a great space for Fam Time and/or informal entertaining. Two well sized bedrooms alongside a 3/4 bath complete the lower level. Easily access the garage from the upper level or lower level. Enjoy this move in ready home with possibilities to customize it into your perfect home. There is potential to transform the lower level into a rental space. Featuring many upgrades including, new windows, new flooring, Propane Furnace, Heat Pump and fresh paint inside and out. (id:6769)

Blair MacPhail

ROYAL LEPAGE PRINCE EDWARD REALTY

Phone: (902) 393-7507





RE/MAX Kelowna
100-1553 Harvey Avenue
Kelowna, BC,
Canada