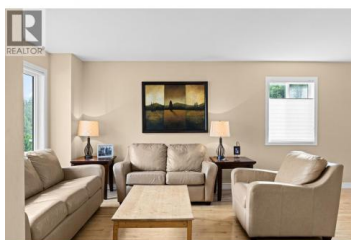
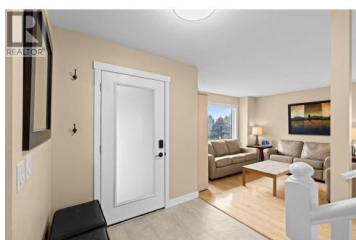
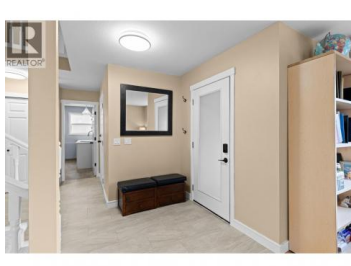


## 774 Nahanni Place Kelowna British Columbia

Dilworth Mountain

**\$1,049,000**



Welcome Home to 774 Nahanni Place! Located on desirable Dilworth Mountain, this exceptional property perfectly balances striking curb appeal with effortless family functionality. Step inside to a flexible main floor layout designed for entertaining and cozy living. Large windows flood the living and dining areas with natural light. The kitchen features timeless shaker cabinets, premium granite countertops, and overlooks a gorgeous, private greenspace backdrop. It opens directly into a cozy family room complete with a fireplace—perfect for keeping an eye on the kids. Rarely do you find a layout so perfectly tailored to family life: upstairs, you will find all 4 bedrooms on the exact same floor, offering ultimate peace of mind. The primary suite features a 4-piece ensuite and three additional bright bedrooms. Head downstairs to an awesome flex room ready to become the ultimate kids' playroom or your dream home theater, alongside tons of storage space. Backing directly onto a serene greenspace, the private backyard is your own slice of Okanagan nature. Sip your morning coffee on the patio or host summer BBQs in total privacy. The unique tiered yard beautifully creates two distinct outdoor experiences, complete with a hot tub and an oversized storage shed. Central to everything Kelowna has to offer, this home checks all the boxes! (id:6769)

### Lee Ivans

Royal LePage Kelowna

Phone: (250) 575-5455

<https://dionivansrealestate.ca/>



RE/MAX Kelowna  
100-1553 Harvey Avenue  
Kelowna, BC,  
Canada

