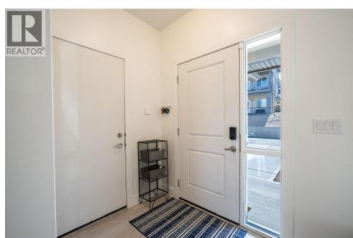




## 933 Mt Robson Place 79 Vernon British Columbia

Middleton Mountain Vernon

# \$719,900



The perfect luxurious townhouse w/ unobstructed views of Swan Lake & the City of Vernon, featuring breathtaking panoramic valley & mountain scenery. Rancher style entry w/ garage, foyer, open-concept kitchen, living & dining, plus a 2 pce powder rm. Enjoy the private covered deck facing west & north over the cityscape & Swan Lake. Inside features clean modern lines, 9-ft ceilings, quartz countertops & an open layout ready for your touch. Upstairs has 3 spacious bedrooms, including a large primary w/ walk-in closet & ensuite w/ walk-in shower. A second full bath w/ tub & shower & a conveniently located laundry rm complete this level. The unfinished walkout basement offers great potential w/ separate entry to a covered patio & a compact, fully enclosed yard w/ low-maintenance black chain-link fence. Fully insulated & roughed-in for a bathroom. This space is perfect for a gym, living space, or storage. Corner unit w/ single attached garage (insulated & drywalled) + parking for 2 on a flat concrete driveway. Located in The Vue, a sought-after townhouse complex built in 2018, this home is just minutes from Vernon Jubilee Hospital and only 30 minutes to Kelowna International Airport. Enjoy nearby walking trails in Middleton Mountain Park, offering stunning views of Kalamalka Lake. (id:6769)

**Maria Besso**

RE/MAX Vernon

Phone: (250) 308-1152

<https://www.besso.ca/>



**RE/MAX Kelowna**  
 100-1553 Harvey Avenue  
 Kelowna, BC,  
 Canada

