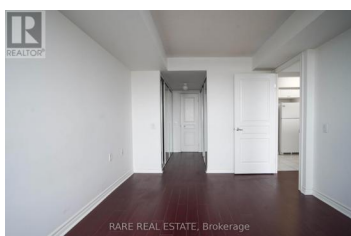
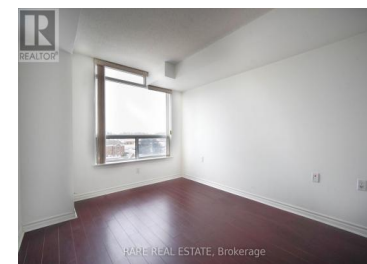
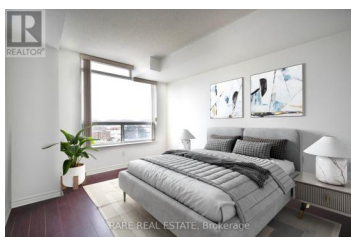
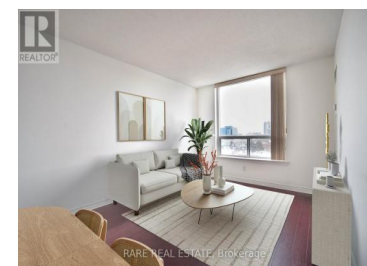




9015 Leslie Street 807 Richmond Hill Beaver Creek Business Park Ontario

Beaver Creek Business Park

\$549,000



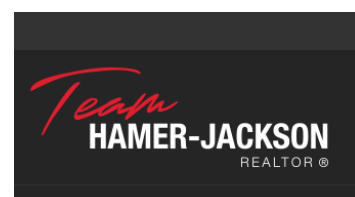
Luxury 'The Grand Parkway' in the most desirable area in Richmond Hill. Sun-soaked functional one bedroom + den layout with unobstructed west views. Updated laminate flooring throughout. Easy access to Hwy 404 & 407, 24 hrs gatehouse security. Walk to all amenities, Times Square, Viva Transit & Hwy 7. Use of Parkway Fitness and Racquet Club includes indoor and outdoor swimming pool, weight and cardio room, steam rooms, fitness classes, table tennis, and basketball & volleyball. (id:6769)

JEFFREY CHENG

RARE REAL ESTATE

Phone: (416) 233-2071

<https://www.foundryrealty.ca/>



RE/MAX Kelowna
100-1553 Harvey Avenue
Kelowna, BC,
Canada