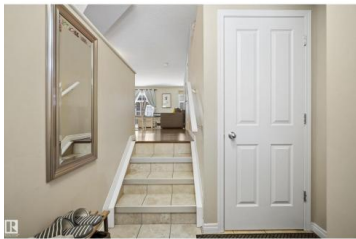




Edmonton Alberta

Summerside

\$319,990



Welcome to Mosaic Shores in the sought-after community of Summerside--where lifestyle and convenience come together. This well-kept 2-bedroom townhome features dual primary suites, each with its own private ensuite, making it ideal for roommates, guests, or a small family. The main floor offers a functional open-concept layout with a practical kitchen, ample cabinetry, and a comfortable living space perfect for everyday living. Enjoy exclusive lake access, giving you and your family year-round enjoyment--from relaxing beach days in the summer to skating in the winter. Located close to schools, parks, shopping, and major roadways, this home offers great value in a highly desirable community. Whether you're a first-time buyer or investor, this is a solid opportunity to get into the Summerside market. (id:6769)



Bernie Chu

RE/MAX Elite

Phone: (780) 908-6138



RE/MAX Kelowna
100-1553 Harvey Avenue
Kelowna, BC,
Canada