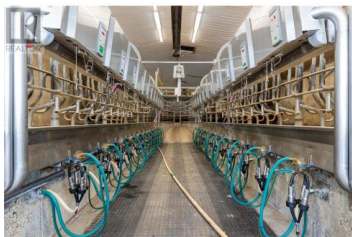


816 Malcolm and 266 Mallory Road Enderby British Columbia
 Enderby / Grindrod
\$8,449,000



256 acres , very fertile soil, 2 Farms. Could milk up to 600 cows milking at both farms or milk 400 cows with double 12 rapid exit parlour, and raise heifer at the other farm, 1 x 4000 gal Tanks, alley scrapers, 3 Manure pits, Shop, bunker silo, hay shed, calf barn, Composting building You could have full heifer facility at other farm. Dairy barns 150 free stalls room for 300 Manure pit, shop, bunker silo, generator, 4 homes, in total Renovated like new 4000+ sq.ft home, 4 Bedroom home, a double wide mobile, Single wide mobile. Great location between Salmon Arm and Enderby, close to lots of recreational activity, with lakes and mountains (id:6769)

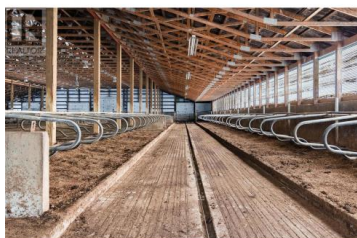
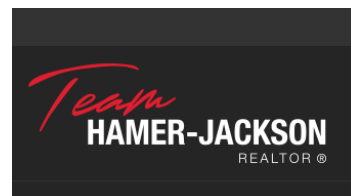


Gordie Blair

B.C. Farm & Ranch Realty Corp.

Phone: (250) 517-0557

<http://www.bcfarmandranch.com/>



RE/MAX Kelowna
 100-1553 Harvey Avenue
 Kelowna, BC,
 Canada