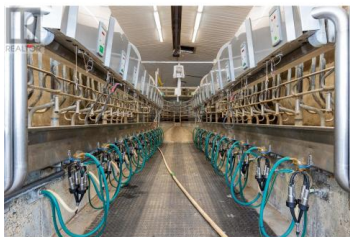




816 Malcolm Road Enderby British Columbia

Enderby / Grindrod

\$3,999,000



101 acres, 70+ cultivated, room told milk 400 cows with westfalia double 12 rapid exit parlour, plate cooler, 75KW generator, 4000 gal Tank, alley scrapers, 3 Manure pits, Shop, bunker silo, hay shed, calf barn, equipment shed drive thru feed alleys, Composting building Well designed milking facility for cow movement, Completely Renovated 6 bedroom 4000+ sq.ft home shows like new. Great location between Salmon Arm and Enderby, close to lots of recreational activity, with lakes and mountains. (id:6769)

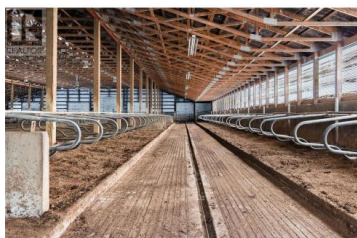
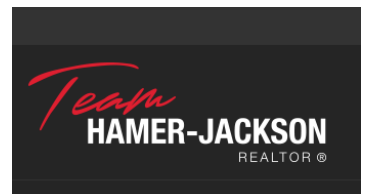


Gordie Blair

B.C. Farm & Ranch Realty Corp.

Phone: (250) 517-0557

<http://www.bcfarmandranch.com/>



RE/MAX Kelowna
100-1553 Harvey Avenue
Kelowna, BC,
Canada