

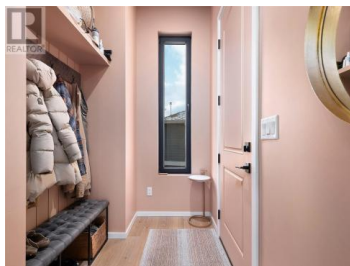


REALTOR®

818 Middleton Way Coldstream British Columbia

Middleton Mountain Coldstream

\$2,399,000



Perched on the hillside with RedTail hawks as neighbours to the north and the ever-stunning Kalamalka Lake view as southern neighbour, this bespoke home across from the Middleton Mtn trails is perfect for the discerning buyer. Envisioned by a husband & wife team capitalizing on their expertise in heating/cooling/energy efficiency & interior design, this home showcases superior materials & craftsmanship from top to bottom. Soaring ceilings & substantial glass link the gracious indoor spaces with the spectacular outdoor views. Modern & eclectic design highlights the superb mechanics that make this home comfortable & efficient. Windows and doors are triple glazed German-built Innotech tilt & turn construction. Hydronic in-floor heating AND COOLING w/ zone control is supplemented by hydronic heat pump & fan coil technology with 2 NG fireplaces for direct warmth and ambiance. The home features a European-designed HVAC system for the ultimate in air filtration & quality. Italian Ilve, deVol, Sub-Zero, Kohler & Fisher & Paykel are brands featured in this home. Enjoy the view from the upper covered deck or from the in ground pool...or swing the ensuite window open for a private sensory therapy spa bath. Had enough sun? Take your book and your drink out to the private courtyard or enjoy al fresco dining in the shade. The features of this home are too numerous to capture. Book you...



RE/MAX Kelowna
100-1553 Harvey Avenue
Kelowna, BC,
Canada

Steve Onsorge

Coldwell Banker Executives Realty

Phone: (250) 260-8618

