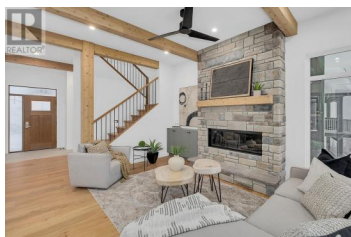




## 255 Feathertop Way 82 Big White British Columbia

Big White

**\$1,599,900**



Built by award-winning H&H Custom Homes, the newest luxury residences at 255 Feathertop Way are now available in the popular Sundance Resort at Big White. Offering true ski-in, ski-out access, Sundance is perfectly positioned beside both the Bullet Express and Black Forest chairlifts—just a short walk from the Village Centre. The homes feature a timeless craftsman-style exterior with board and batten siding, black metal-clad windows, and rich wood-stained accents. Inside, you'll find a modern chalet aesthetic with 10-foot ceilings on the main level, premium flooring, upgraded millwork, and top-tier appliance packages throughout. Each unit includes a spacious 398 sq.ft. garage designed to accommodate full-size SUVs or pickup trucks, as well as a private 8-person Arctic Spa hot tub. Ownership also includes full access to Sundance Resort's exceptional amenities, including a private shuttle, heated outdoor pool with waterslide, hot tubs, lounge with pool table, kids' play area, theatre room, and fitness centre with change rooms. **ADDED BONUS:** The developer will cover your strata fees for the first 3 years! (id:6769)

**Jesse East**

RE/MAX Kelowna

Phone: (250) 862-1234

<http://www.jesseeast.com/>



**RE/MAX Kelowna**  
100-1553 Harvey Avenue  
Kelowna, BC,  
Canada

