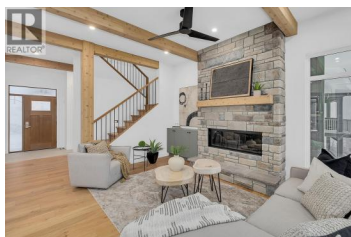




255 Feathertop Way 82 Big White British Columbia

Big White

\$1,449,800



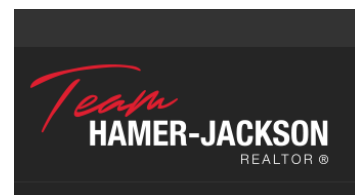
Built by award-winning H&H Custom Homes, the newest luxury residences at 255 Feathertop Way are now available in the very desirable Sundance Resort at Big White. Offering true ski-in/ski-out access, Sundance is ideally located beside both the Bullet Express and Black Forest chairlifts, and just a short stroll to the Village Centre. These homes showcase a timeless craftsman-inspired exterior featuring board-and-batten siding, black metal-clad windows, and rich wood-stained accents. Inside, a modern chalet aesthetic awaits with 10-foot ceilings on the main level, premium flooring, upgraded millwork, and top-tier appliance packages throughout. Each residence includes a generous 398 sq.ft. garage designed for full-size SUVs or pickup trucks, along with a private 8-person Arctic Spa hot tub. Ownership also provides full access to Sundance Resort's impressive amenities, including a private shuttle, heated outdoor pool with waterslide, hot tubs, owners' lounge with pool table, kids' play area, theatre room, and a fully equipped fitness centre with change rooms. (id:6769)

Jesse East

RE/MAX Kelowna

Phone: (250) 862-1234

<http://www.jesseeast.com/>



RE/MAX Kelowna
100-1553 Harvey Avenue
Kelowna, BC,
Canada