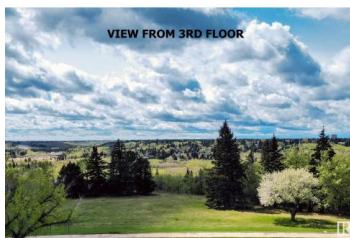
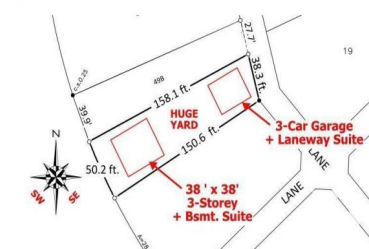
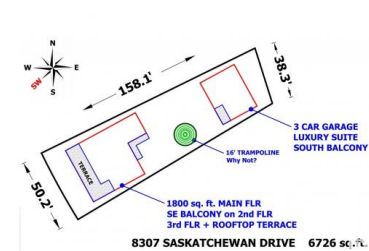




## Edmonton Alberta

Windsor Park (Edmonton)

**\$677,000**



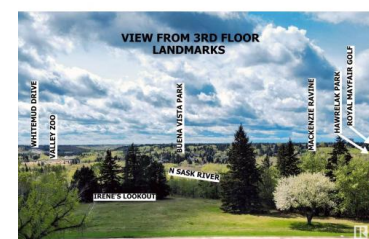
PRICE REDUCTION OF \$100,000 AVAILABLE ONLY UNTIL APRIL 30, 2025!

Please price-compare: 625 sq.m., 6726 sq.ft., 50-foot front, 38-foot lane way access. Build a 38 ft. wide 3-storey home and a triple garage. Best Southwest sunset view on Saskatchewan Drive. Because you are directly across from Irene's Lookout you see the whole River Valley from your new second and third floors. Serviced lot is cleared and flat - no demolition required. Motivated seller. (id:6769)

**Alexandra Krutzfeldt**

RE/MAX Elite

Phone: (780) 964-4215



RE/MAX Kelowna  
100-1553 Harvey Avenue  
Kelowna, BC,  
Canada