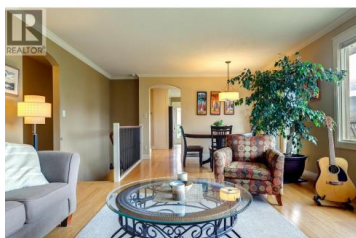




8308 Kalview Drive Coldstream British Columbia

Mun of Coldstream

\$945,000



Experience the quintessential Coldstream lifestyle at 8308 Kalview Drive. This thoughtfully preserved 4-bedroom, 3-bathroom home perfectly balances pride of ownership with an iconic Okanagan backdrop. Inside, the home is bright and comfortable, while the expansive deck offers a front-row seat to panoramic views of Kalamalka Lake and the Monashee Mountains. The grounds are a standout feature, offering a manicured yard with established peach and apricot trees, grapes, strawberries, and lush perennials. Designed with longevity in mind, the property also includes a single garage and ample additional parking for your vehicles and outdoor gear. The location is truly unbeatable: you are minutes from the turquoise waters of Kalamalka Beach and just around the corner from world-class mountain biking in Kal Park. This prime spot offers easy access to the highway for a quick commute to Kelowna and is just 30 minutes from the Kelowna International Airport. Whether you're heading to the links at nearby championship golf courses or driving up to SilverStar Mountain Resort for premier skiing, this home puts the best of the Okanagan right at your doorstep. Measurements taken from iGuide. (id:6769)

Jayne McKillop

RE/MAX Vernon

Phone: (250) 307-8137

<https://jaymemckillop.com/>



RE/MAX Kelowna
100-1553 Harvey Avenue
Kelowna, BC,
Canada

