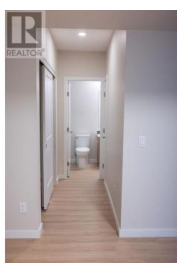
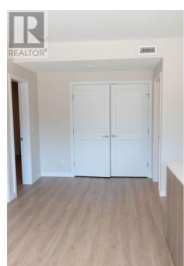


685 Boynton Place 84 Kelowna British Columbia

Glenmore

\$488,000



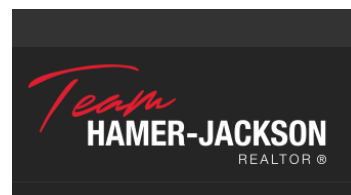
Welcome to the highly sought-after Promontory development. This is 2 2-bedroom, 2 bathroom ground floor townhome. Designed for comfort and style, this bright and airy home features an efficient layout with high ceilings, easy-care flooring, and plenty of natural light. The modern kitchen includes quartz countertops, a large island, and luxury stainless steel appliances, with a stacked washer and dryer adding everyday convenience. Enjoy eco-friendly living with solar-powered heating and cooling, green energy features, and data center upgrades. Just steps from Knox Mountain Park, Kathleen Lake, and Glenmore Ridge Trails, and only minutes from Downtown Kelowna, Okanagan Lake, restaurants, wineries, UBCO, and the airport. This unbeatable location offers both nature and urban amenities at your fingertips. Pet and rental friendly (2 dogs, 2 cats, or 1 of each allowed). Ideal for first-time buyers or investors. Immediate possession available--don't miss out! (id:6769)

Renata Steele

RE/MAX City Realty

Phone: (778) 319-5006

<http://www.renatasteele.ca/>



RE/MAX Kelowna
100-1553 Harvey Avenue
Kelowna, BC,
Canada