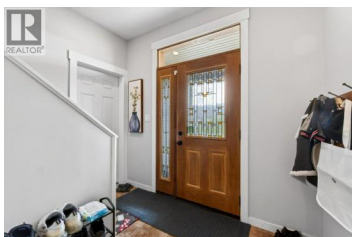




840 12 Street Salmon Arm British Columbia

SE Salmon Arm

\$795,000



WELCOME TO THIS GREAT LAKE AND MOUNTAIN VIEW HOME in Laurel Estates subdivision with a very functional floor plan. Open concept design, the main living area is filled with natural light and framed by incredible views, creating a warm and inviting space for both everyday and when entertaining. The main floor features three bedrooms and two bathrooms, offering convenient one-level living. Use the whole home or just the main level and turn the fully self-contained one-bedroom suite with its own separate entrance and laundry - into a guest space, in-law suite or a mortgage helper. Enjoy your outdoor area with a covered back deck off the kitchen--perfect for relaxing. The front deck provides the ideal vantage point to enjoy your morning coffee or unwind in the evening with stunning sunsets and sweeping views. The property offers ample parking, including a double garage, large driveway, and additional space for an RV or boat. Located close to schools and walking trails, this home combines convenience and a relaxed lifestyle. Don't miss the opportunity to experience all this property has to offer--be sure to check out the virtual tour! (id:6769)

Tina Cosman

eXp Realty

Phone: (250) 804-6765

<http://www.tinacosman.com/>



RE/MAX Kelowna
 100-1553 Harvey Avenue
 Kelowna, BC,
 Canada

