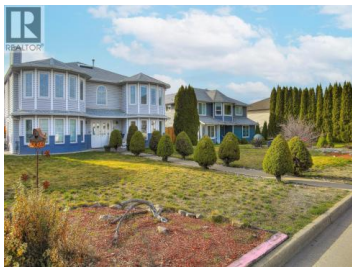




850 Hollywood Road Kelowna British Columbia
 Rutland North
\$1,249,000



Rare 7.6% CAP Rate - Turn-Key Multi-Unit Powerhouse! Stop searching for the "perfect" investment—it just arrived. This massive multi-generational estate offers a rare combination of high-yield cash flow and premium 2023 renovations. Currently generating a staggering \$9,200/month in rental income from students and professionals, this property is a great cash flow investment. The Layout: Main Residence: Spacious 9 Bedrooms / 5 Bathrooms, 4 kitchen home. Dual Suites: Two fully self-contained 2-Bedroom suites. Bonus Potential: A dedicated bachelor suite (plumbed/ready for easy bathroom install). The \$250,000 Edge: Forget the typical "run-down" rental. This home was extensively updated in 2023. We're talking a brand-new roof, modern bathrooms, fresh upstairs flooring, and professional landscaping. Prime Location: Situated in a quiet, safe Rutland North pocket right behind Pearson Elementary. It's perfectly positioned on a major bus route to UBCO, ensuring your vacancy rate stays near zero. Whether you're looking for a blue-chip addition to your portfolio or a multi-generational family home that pays for itself, this is it. PS: Windows and Furnace are original but in good working order. Measurements are from iGuide, if important, please re-measure. FURNITURE NEGOTIABLE (id:6769)



RE/MAX Kelowna
 100-1553 Harvey Avenue
 Kelowna, BC,
 Canada

Sam Belete

Royal LePage Kelowna

Phone: (250) 351-6029

<https://www.sambelete.royallepage.ca/>

