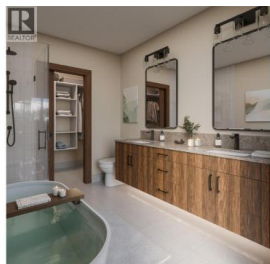




**255 Feathertop Way 87 Big White British Columbia**

Big White

**\$1,345,000**



Built by H&H Custom Homes--recognized as Okanagan Builder of the Year--255 Feathertop Way introduces the newest ski-in, ski-out residences at Big White's Sundance Resort. With direct connections to the Bullet Express and Black Forest chairlifts, these homes put you on the slopes within moments, while Big White's Village Centre is just a short walk away. The architecture draws from modern craftsman design, blending board-and-batten siding, black metal-clad windows, wood accents, and far-reaching mountain views. Each 2,300-square-foot residence includes 3 bedrooms, 3 bathrooms, a den, and an oversized lock-off closet. The main floor integrates an open kitchen and gathering area with a covered deck, hot tub, and gas BBQ connection--ideal for year-round use. Every unit also incorporates a 510-square-foot, 1-bedroom suite with its own entrance, covered patio, summer kitchen, luxury vinyl plank flooring, and upgraded soundproofing. Sundance Strata fees cover building insurance, exterior maintenance, garbage and recycling collection, snow removal, and full access to resort amenities--including the private shuttle, heated outdoor pool and slide, multiple hot tubs, and indoor facilities. (id:6769)

**Jesse East**

RE/MAX Kelowna

Phone: (250) 862-1234

<http://www.jesseeast.com/>



**RE/MAX Kelowna**  
100-1553 Harvey Avenue  
Kelowna, BC,  
Canada

