

FOR SALE

HEARTLAND INDUSTRIAL PARK

Fort Saskatchewan, AB

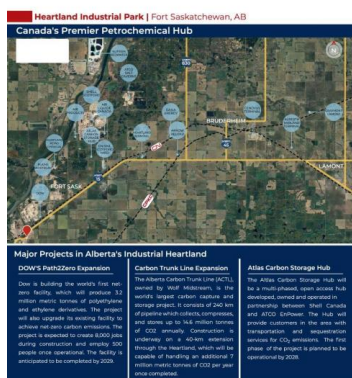
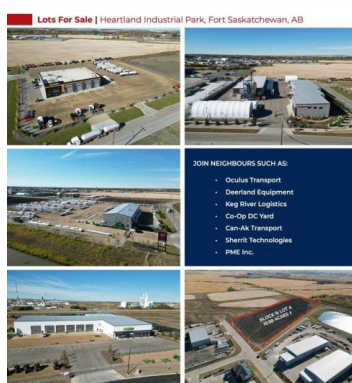


Fort Saskatchewan Alberta

\$756,650

HIGHLIGHTS

- Industrial lots for sale
- Build to suit opportunities available
- Strategically located in Alberta's Industrial Heartland
- High visibility along Highway 15 with traffic at an average of 52,000 vpd
- Tax incentives available



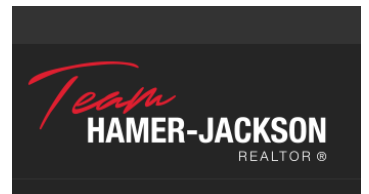
Industrial lots for saleBuild to suit opportunities availableStrategically located in Alberta's Industrial HeartlandHigh visibility along Highway 15 with traffic at an average of 52,000 vpdTax incentives available (id:6769)

Michelle A. Plach

HonestDoor Inc

Phone: (780) 965-4662

<https://www.honestdoor.com/>



RE/MAX Kelowna
100-1553 Harvey Avenue
Kelowna, BC,
Canada