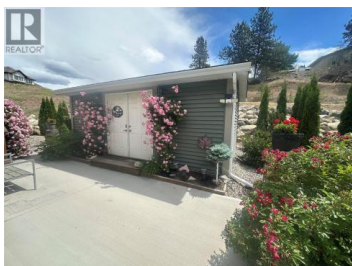
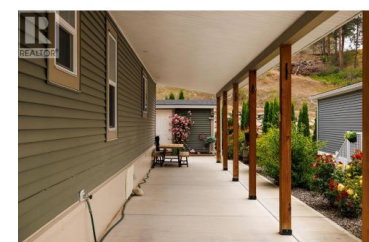




1835 Nancee Way Court 88 Kelowna British Columbia

West Kelowna Estates

\$469,900



Still sparkling like new, this turnkey custom modular home on a concrete slab offers loads of upgrades & gleams with pride of ownership. The bright open floor plan, vaulted ceilings, gleaming kitchen, beautiful built-ins & storage galore add a sense of luxury. 1152 sf, 2 Bedrooms + den (possible 3rd bedroom), spacious ensuite with oversized shower and extra walk-in storage, plus full second bath that also becomes a cheater ensuite to the second bedroom. The care on the inside carries over into the stunning private outdoor retreat starting with massive 315 sf wood deck (pressure-treat wood), impressive low-maintenance yard & roses, U/G sprinklers -PLUS- a 48ft long custom patio/carport area with tasteful wood beam supports. Use this space for extended outdoor living, entertaining & BBQ's -or- park your collector cars here -PLUS- driveway parking for 2-3 more vehicles. AND, are you dreaming of a man cave, a she-shed, a fantastic workshop or space for a freezer or even more storage? Then you will love the matching oversized 12'3 x 20'3 high-end ""shed"" w/ dbl doors & electricity. Enjoy the serene private setting on a no-thru paved road nestled away in what is still a corner of Kelowna yet just west over the bridge. Convenient access to the rest of Kelowna, Okanagan corridor, outdoor activities, nature, shopping, cultural events, fine dining, vineyards & wineries & the lake --...



RE/MAX Kelowna
 100-1553 Harvey Avenue
 Kelowna, BC,
 Canada

Heidi Gross

RE/MAX Kelowna

Phone: (250) 801-4276

<http://www.heidigross.ca/>

