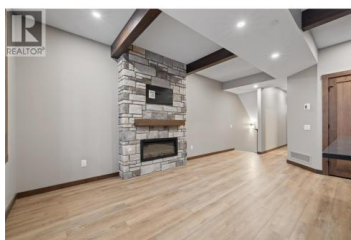
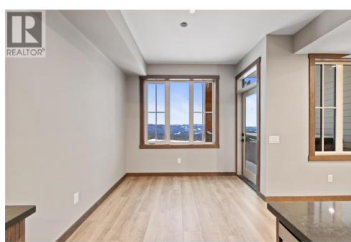




255 Feathertop Way 88 Big White British Columbia

Big White

\$1,224,800



Built by H&H Custom Homes--recipient of Okanagan Builder of the Year--255 Feathertop Way introduces Big White's newest collection of true ski-in/ski-out residences at the sought-after Sundance Resort. Perfectly positioned for seamless mountain access, these homes are just steps from the Bullet Express and Black Forest chairlifts, with the vibrant Village Centre only a short walk away. The modern craftsman exterior showcases board-and-batten siding, black metal-clad windows, warm wood accents, and sweeping alpine views. Inside, each residence offers approximately 2,300 sq. ft. of thoughtfully designed living space, featuring 3 bedrooms, 3 bathrooms, a den, and an oversized lock-off storage room. The main level features an open-concept kitchen and living area that extends effortlessly onto a covered deck complete with a hot tub and gas BBQ hookup--ideal for year-round enjoyment. Adding exceptional versatility, each home also includes a 510 sq. ft. one-bedroom suite with a private entrance, covered patio, summer kitchen, luxury vinyl plank flooring, and enhanced soundproofing. Sundance's strata fees cover building insurance, exterior maintenance, garbage and recycling, snow removal, and access to resort-style amenities, including a private shuttle, heated outdoor pool with slide, multiple hot tubs, and indoor recreation spaces. (id:6769)

Jesse East

RE/MAX Kelowna

Phone: (250) 862-1234

<http://www.jesseeast.com/>



RE/MAX Kelowna
100-1553 Harvey Avenue
Kelowna, BC,
Canada

