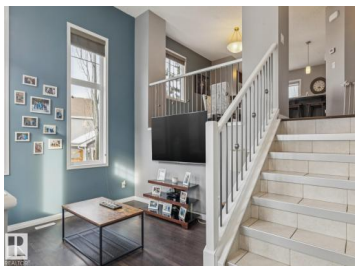
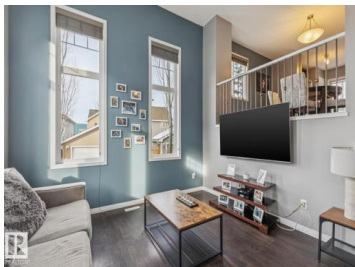




**Edmonton Alberta**

Summerside

**\$349,900**



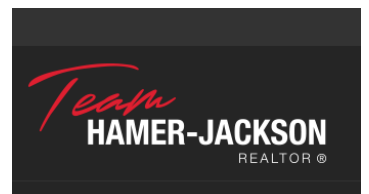
Awesome townhome in prestigious Summerside! This 1252 sqft END UNIT is situated in one of the best locations in the complex and offers one of the largest floor plans. Very sleek and modern feel, offering a spacious living area with steps up to the gorgeous kitchen w/s.s. appliances, granite counters, and tile backsplash. Gleaming laminate flooring, ample dining space and patio off the kitchen. Upstairs you will find 3 large bedrooms and 4-pc bath. The lower level offers laundry area and loads of storage space. Beautiful courtyard and double attached garage complete the home. Low condo fees, proximity to schools, shopping and full access to Lake Summerside make this a great property at a great price! (id:6769)

**Ryan R. Lauber**

RE/MAX Elite

Phone: (780) 717-4861

<http://ryanlauber.com/>



**RE/MAX Kelowna**  
100-1553 Harvey Avenue  
Kelowna, BC,  
Canada