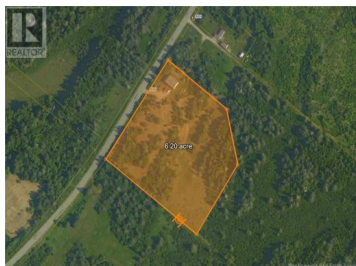




New Horton New Brunswick

\$397,900

New Brunswick Real Estate Board



Two houses connected - 6.2 acres - water views of the Bay of Fundy - right on Scenic Drive! Located in a touristic area close to beaches, Provincial, and National Parks like Hopewell Rocks, Mary's Point, Cape Enrage, and Fundy Park. Would make an AMAZING Air B and B with complete privacy for the homeowners! Beautiful turn-key home of over 2000 square feet, WITH an older home of almost 1500 square feet attached! Gorgeous water views, mountain views, and views of Nova Scotia! Older home built 1850-1890 and newer home built approx. 25 years ago. The new house is completely open on the main level, providing ample light and a huge space for family gatherings. The old house has a typical square main floor with the old kitchen, laundry room/bathroom, living room, and family room in each corner. Four large and sunny bedrooms on the upper floor of the new house, and four bedrooms with old-fashioned slanted ceilings in the upper floor of the old house. All electrical redone, a new well, and a new concrete septic tank and field all installed at the time the new house was added on. Two 8x16 barns in an L shape and a large shed/baby barn provide space for animals and farm equipment. Property will be subdivided to approximately 6.2 acres in size before closing. An extra 60+ acres of waterfront land are available at an extra cost if the property remains un-divided. (id:6769)



RE/MAX Kelowna
100-1553 Harvey Avenue
Kelowna, BC,
Canada

Tina Lynch

RE/MAX Quality Real Estate Inc.

Phone: (506) 899-3885

