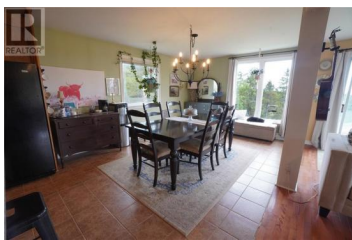




New Horton New Brunswick
\$514,900



Cliffside waterfront - two houses connected - over 67 acres - right on Scenic Drive! Welcome to 899 route 915, a beautiful turn-key home of over 2000 square feet, WITH an older home of almost 1500 square feet attached! Gorgeous water views, mountain views, and views of Nova Scotia from almost every window in the house! Older home built 1850-1890 and newer home built approx. 25 years ago. The new house is completely open on the main level, providing ample light and a huge space for family gatherings. The old house has a typical square main floor with the old kitchen, laundry room/bathroom, living room, and family room in each corner. Four large and sunny bedrooms on the upper floor of the new house, and four bedrooms with old-fashioned slanted ceilings in the upper floor of the old house. All electrical redone, a new well, and a new concrete septic tank and field all installed at the time the new house was added on. Fixing up the old house would make an absolutely magical dual-family or multi-generational home, or a house with a rental attached. Two 8x16 barns in an L shape and a large shed/baby barn provide space for animals and farm equipment. Over 200 meters of road frontage as well as a deeded right-of-way on a separate driveway that takes you to the back of the property by car. So much potential! Check out the 3D tour, the drone video tour, and the house plan for more in...



RE/MAX Kelowna
 100-1553 Harvey Avenue
 Kelowna, BC,
 Canada

Tina Lynch
 RE/MAX Quality Real Estate Inc.
 Phone: (506) 899-3885

