



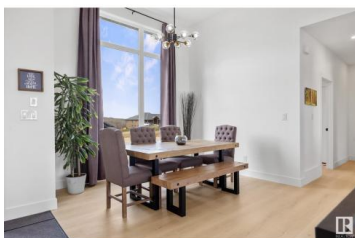
Rural Parkland County Alberta

Hills Of Twin Lakes

\$949,900



WOW!! Best subdivision in Parkland County. This gorgeous executive bungalow with 2.12 acres is situated with VIEWS OF LAKES - FRONT AND BACK! 1820 sq. ft. of luxury with an open floor plan, floor to ceiling windows for best views, two bedrooms on main, den, dining room, and living room with views. Contemporary kitchen offers quartz countertops, large island with sink, high-end appliances, walk-in pantry AND coffee station. Dining room is ideally situated to see views of nature from every angle. Large primary bedroom with 5 piece spa-like ensuite and walk-in closet. Large 2nd bedroom and main floor den. Fully dvpd basement has large recreation room with bar, 2 large bedrooms and 4 piece bathroom. FOUR CAR ATTACHED GARAGE. Room to park RV Yard is a retreat backing onto trees and lake. Ideally located near Chickadoo Recreation Area, Stony Plain, and major highways. Stunning home only 1 year old with elegant luxury and surrounded by nature! (id:6769)



Sharon C. Ryan

RE/MAX Elite

Phone: (780) 233-6398

<http://www.sharonryan.ca/>



RE/MAX Kelowna
100-1553 Harvey Avenue
Kelowna, BC,
Canada