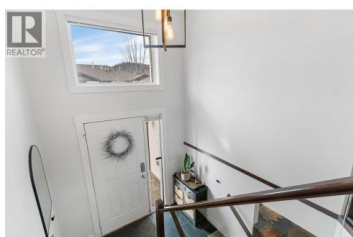


225 Glen Park Drive 9 Kelowna British Columbia

Glenmore

\$665,000



Beautifully updated 3-bedroom, 2 full bathroom townhome in a fantastic Glenmore location! Ideal for families, downsizers, or anyone seeking comfortable, low-maintenance living in a central setting. The bright, open-concept living area is perfect for everyday living and entertaining, featuring a spacious kitchen complete with a stainless steel appliance package and elegant quartz countertops throughout. The thoughtful layout offers one bedroom on the main level, with two additional bedrooms and a second rec space downstairs -- ideal for a media room, play area or home office. The living room showcases picturesque views of the Dilworth Mountain range and overlooks Madera Glen Park, creating a peaceful backdrop to your everyday living. Enjoy being just minutes from schools, shopping, and a short drive to downtown Kelowna, Kelowna International Airport, and Orchard Park Shopping Centre. One of the best locations in the complex -- the very first home on the right as you enter -- offering both convenience and beautiful park views. With plenty of nearby street parking for guests and unbeatable access to amenities, this home truly offers the best of central living. Available for immediate possession. (id:6769)

Amanda Cormier

Royal LePage Kelowna

Phone: (250) 878-2444

<http://www.pointrealestategroup.com/>



RE/MAX Kelowna
 100-1553 Harvey Avenue
 Kelowna, BC,
 Canada

