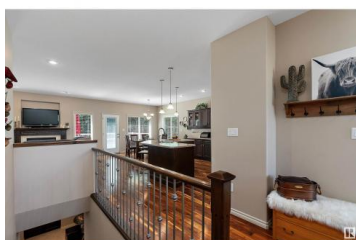
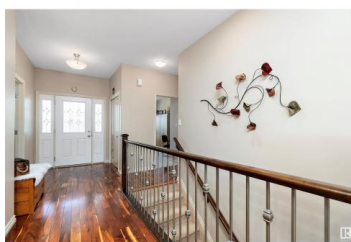




Rural Leduc County Alberta

Highlands

\$899,900



Wonderful 1587 sq. ft. BUNGALOW on 1.45 GORGEOUS ACRES BACKING TREES with a TRIPLE GARAGE, CENTRAL AIR in the stunning HIGHLANDS subdivision just MINUTES TO BEAUMONT & pavement to the door. This SHERBILT HOMES bungalow is perfect offering a large foyer that leads into the GREAT ROOM with a GAS FIREPLACE & BRAZILIAN HARDWOOD FLOORS. The Island kitchen features RICH MAPLE CABINETS, a WALK THRU PANTRY, newer STAINLESS APPLIANCES & the SUNLIT DINING AREA provides access to the GROOMED BACK YARD. A large MUD ROOM, pantry access, LAUNDRY & HEATED GARAGE are all handy to the foyer & kitchen. The SPACIOUS PRIMARY bedroom offers a SPA ENSUITE with corner tub, shower & WI CLOSET with BUILT IN FEATURES. A bedroom plus a convenient DEN/BEDROOM & a 4 piece bath complete the main level. The CENTRAL STAIRCASE leads to a GAMES/WORKOUT ROOM with WET BAR, a cozy FAMILYROOM, 2 more bedrooms & a 4pc. bath, storage & furnace room. MULTI LEVEL DECKS WITH GAS LINE, HOT TUB, TANKLESS H2O, SHED, POURED WALKWAYS, TRAILS & FIREPIT! (id:6769)

Mona C. LaHaie

RE/MAX Elite

Phone: (780) 850-0800

<http://www.horsepowerranch.com/>



RE/MAX Kelowna
100-1553 Harvey Avenue
Kelowna, BC,
Canada

