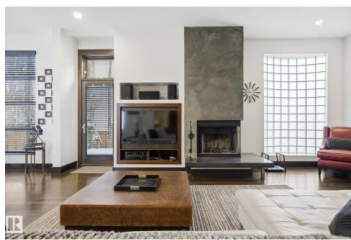
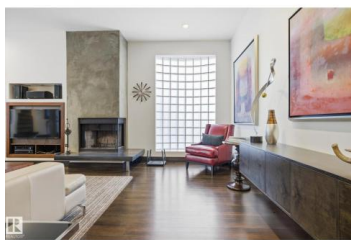
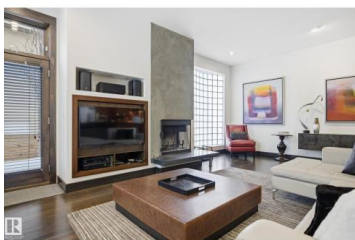
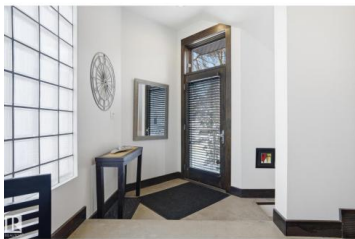




Edmonton Alberta

Strathcona

\$899,000



Modern, Architecturally designed two-storey home, ideally located within steps to Mill Creek Ravine. This impeccably built residence offers 2 bedrooms and 2.5 baths, with 10' ceilings on the main level and striking concrete and steel accents throughout. Features include triple-glazed windows, in-floor heating, custom cabinetry, central A/C, and luxurious finishes. The main floor showcases an open-concept w. light-filled spaces. The chef's kitchen has custom cabinetry, granite countertops, a massive island, and top-of-the-line appliances, including a built-in Miele coffee machine. The great room features a f/p and patio doors opening to the yard, complemented by a large dining area and stunning south- and east-facing windows. The upper level is an executive retreat, highlighted by an expansive primary bedroom with custom cabinetry, a fireplace, and a spa-inspired ensuite. Garden doors lead to a private rooftop. Bsmt. w. bedroom, full bathroom. Under-drive dble garage w. heated driveway. (id:6769)

Sharon C. Ryan

RE/MAX Elite

Phone: (780) 233-6398

<http://www.sharonryan.ca/>



RE/MAX Kelowna
100-1553 Harvey Avenue
Kelowna, BC,
Canada