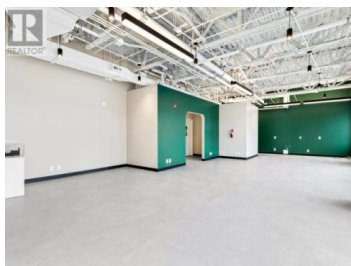
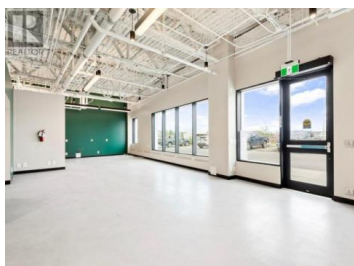




Whitehorse Yukon

\$33



Incredible opportunity to lease 1,221 sq ft of cafe space in the new Chu Níkwān building at 9027 Quartz Road. Located in a high-traffic industrial area and attached to Northwestel's retail store, this ground-floor unit offers excellent exposure and a built-in customer base from the 200+ employees working on site. The space is fully roughed-in and ready for your custom design and layout. Includes customer and staff parking and is offered on a 4-year lease term. Ideal for a boutique cafe or quick-service concept looking to establish a presence in a growing commercial hub. Available for immediate occupancy. (id:6769)

Spencer Bergen

COLDWELL BANKER REDWOOD REALTY

Phone: (867) 335-1716



RE/MAX Kelowna
100-1553 Harvey Avenue
Kelowna, BC,
Canada