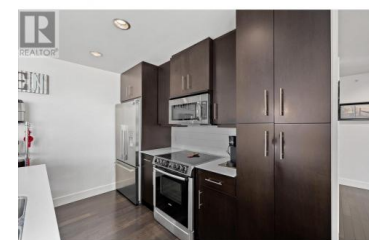
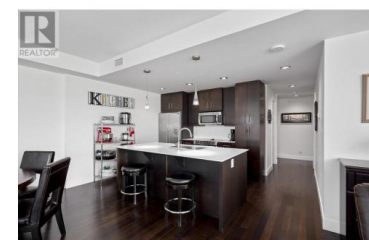
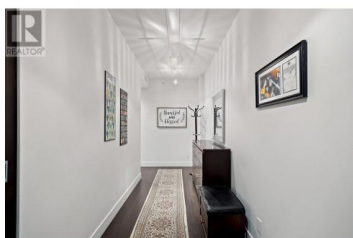
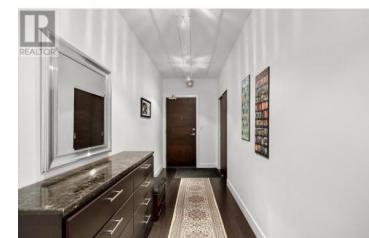


2040 Springfield Road 906 Kelowna British Columbia

Springfield/Spall

\$619,000



PRICED BELOW BC ASSESSMENT! Prepare to be captivated by BREATHTAKING MOUNTAIN & CITY VISTAS that will leave you in awe every single day! This stunning 9th-floor corner suite is a dream come true, featuring floor-to-ceiling windows that flood the space with natural light and showcase panoramic views from every angle. With over 1200 sqft of functional living space, this thoughtfully designed condo offers everything you need for a luxurious lifestyle. The spacious primary bedroom boasts his/her closets, a 5-pc ensuite with dual vanities, and its own private balcony. The open-concept main living area is complete with a beautiful kitchen, large island with pendant lighting, formal dining space, office nook, and a living room. Step out onto the large secondary balcony, perfect for hosting friends and family. Head up to the 15th-floor amenity deck and elevate your lifestyle. This amenity-rich space offers a massive patio with jaw-dropping views, a fireplace, 2 BBQs, a rooftop pool and hot tub. The 2nd floor features a dynamic fitness center to keep you active. Guests coming to visit? Take advantage of the 2 guest suites. Your furry friends will also enjoy the dog wash station. Additional benefits include strata fees that cover heating, cooling, and hot water, giving you peace of mind in your budget. Plus, the unbeatable location means you're just steps away from a wide array of ame...



RE/MAX Kelowna
 100-1553 Harvey Avenue
 Kelowna, BC,
 Canada

Ryan Peterson

Royal LePage Kelowna

Phone: (250) 870-8880

<http://www.jrfamilyrealtors.com/>

