



# 75 Norman Bethune Avenue 909 Richmond Hill Beaver Creek Business Park Ontario

Beaver Creek Business Park

## \$668,888



CENTURY 21 HERITAGE GROUP LTD. Brokerage



Bright and spacious south-facing unit situated on a high floor, offering plenty of natural light and a well-designed, functional layout. Tucked away in a peaceful yet convenient location, with quick access to Highways 404 and 407, and just steps from public transit. Enjoy the convenience of nearby shops, restaurants, and entertainment within walking distance. Residents of this upscale condominium enjoy a wide range of amenities, including an indoor swimming pool, fitness centre, sauna, concierge service, guest suites, and a party room for entertaining. One parking space and one locker are included in the price. Appliances Included: Refrigerator, stove, built-in dishwasher, washer and dryer, all existing light fixtures, and window coverings. (id:6769)

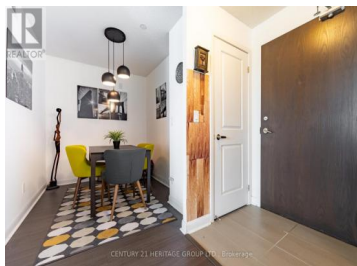
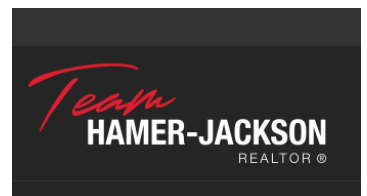


### NADER SALEHI

CENTURY 21 HERITAGE GROUP LTD.

Phone: (905) 764-7111

<http://www.homevilla.ca/>





**RE/MAX Kelowna**  
100-1553 Harvey Avenue  
Kelowna, BC,  
Canada