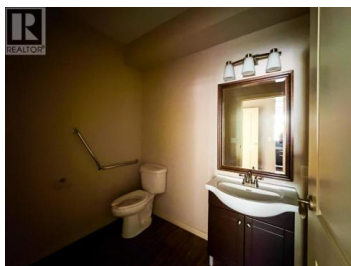
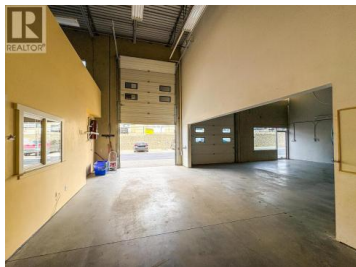




## 3306 Appaloosa Road 9/10 Kelowna British Columbia

North Glenmore

# \$740,000



Located in Mill Creek Industrial Park - Unit #9 / #10 at 3306 Appaloosa Road features 1,890 SF of industrial space with two (2) 12'x12' overhead doors, 6 designated parking stalls and 125AMP Phase-1 power (two panels total) along with value-added mezzanine and other improvements throughout the unit. This property benefits from excellent accessibility, strong signage exposure and proximity to a wide-range of other industrial users within the complex. The space is vacant and can be sold individually as either Unit #9 or Unit #10 for a total of 945 SF, respectively. Please contact the listing agents for more information and to arrange a showing. (id:6769)

### Christopher Wills

Venture Realty Corp.

Phone: (250) 870-1330

<https://venturecommercial.ca/>



RE/MAX Kelowna  
100-1553 Harvey Avenue  
Kelowna, BC,  
Canada