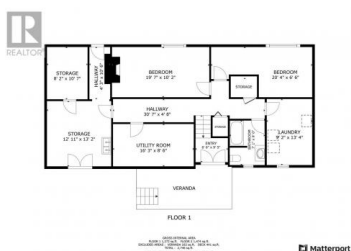




9109 Mackie Drive Coldstream British Columbia

Mun of Coldstream

\$2,199,900



The best of both worlds is where Rural and Urban meet in Coldstream (Nulli Secundus). Estate Country Farm on a beautiful, flat, 9.97 acres of fertile, prime valley bottom land. Located within walking/biking distance to Coldstream Elementary School, and Friesen's Country Thyme Restaurant. Ride your horse to Kalamalka Lake Provincial Park (the Cosens Bay Rd parking lot is approx. 1 km from your door). In Kalamalka Lake Provincial Park you will find the High Rim trail that offers you miles & miles of world-class jaw-dropping scenery, beaches, and riding/ walking/ and biking recreation. All this and you are on City Water and Sewer as well as access to agricultural irrigation water for all your farming needs. Low municipal taxes and only 40 minutes from the Kelowna International Airport, and 30 minutes from World Class Skiing at Silver Star Mountain Resort. (id:6769)



Maria Besso

RE/MAX Vernon

Phone: (250) 308-1152

<http://www.besso.ca/>



RE/MAX Kelowna
100-1553 Harvey Avenue
Kelowna, BC,
Canada