

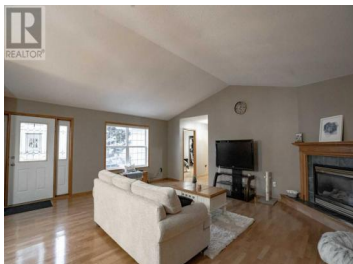


9129 135 Ave Peace River Alberta

Shaftesbury Estates

\$290,000

This beautiful bungalow located in the desirable neighborhood of Shaftesbury estates on a spacious corner lot. If you are looking for single floor living this home is perfect for you! This 1626 square foot home has a large primary bedroom with 3 piece ensuite and large walk in closet, a additional 2 bedrooms and a 4 piece bathroom. The large kitchen, dining room and living room have a beautiful open concept design with vaulted ceilings making the space feel massive. Adding to the beautiful home you can dodge the cold northern Alberta winters with a large double car heated garage. Outside you have multiple off street parking areas with the driveway at the front of the house for the garage also on the side of the garage there is a paved driveway as well for extra vehicles, boats or RV's. If a low maintenance lawn is what your looking for with tons of curb appeal this is perfect for you. Instead of spending all you time mowing lawn, enjoy it on your big front porch enjoying the sun. Don't miss out on this beautiful home and call for a viewing today! (id:6769)

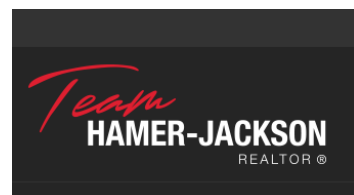


Derek Estabrook

Grassroots Realty Group Ltd.

Phone: (780) 832-0996

<https://www.derekestabrookrealty.com/>



RE/MAX Kelowna
 100-1553 Harvey Avenue
 Kelowna, BC,
 Canada