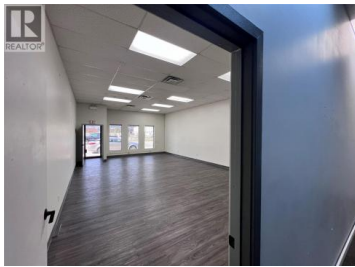
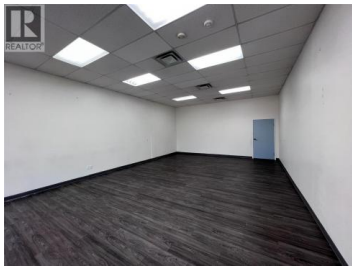
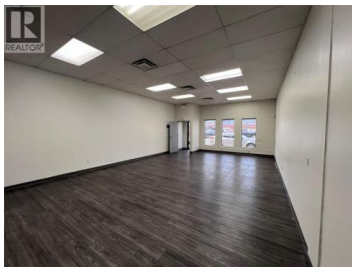




**915 Ellis Street Kelowna British Columbia**  
 Kelowna North  
**\$25**



Opportunity to lease approximately 1,000 SF at 915 Ellis Street, located in the heart of Kelowna's vibrant Brewery District. Zoned I2 (General Industrial), the property offers flexibility for a variety of industrial and commercial uses, making it an excellent opportunity for businesses looking to establish or expand within one of Kelowna's most dynamic and rapid growing neighbourhoods. The unit features an open workspace/showroom area, rear storage space, and a private washroom, along with access to a large fenced rear shared parking area with two (2) stalls with the unit. Surrounded by popular destinations such as Central Kitchen + Bar, Red Bird Brewing, Jackknife Brewing, and Kettle River Brewing, and on the main route to the very popular Knox Mountain Park, this location offers businesses the opportunity to establish themselves in one of Kelowna's most vibrant and sought-after districts. With strong vehicle and pedestrian traffic, a thriving mix of local businesses, and convenient access to Downtown Kelowna, this location provides an exceptional opportunity to position your business within a well-established and continually evolving neighbourhood. Available immediately, with the potential to combine adjoining units for up to approximately 2,000 SF. (id:6769)



**RE/MAX Kelowna**  
 100-1553 Harvey Avenue  
 Kelowna, BC,  
 Canada

**Stephanie Wasden**

Venture Realty Corp.

Phone: (250) 859-1199

