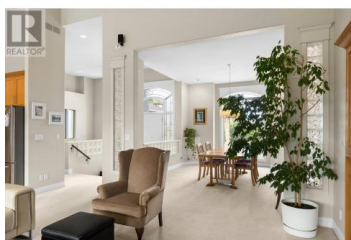
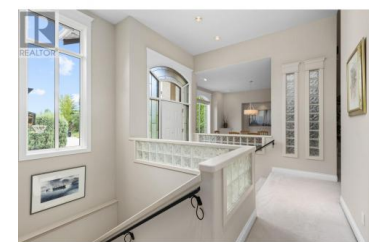




## 916 Skeena Drive Kelowna British Columbia

Dilworth Mountain

**\$1,399,900**



**BUYER BONUS:** The Listing Agent will pay a Buyer \$2000.00 after Registration of the purchase of the subject property, for a FIRM sale by September 16, 2024. Private enclave on Dilworth. Only minutes to all amenities! Pride of Ownership from the enticing curb appeal to exceptional high quality finishing throughout this Rancher with walkout basement. Create & enjoy decadent meals in the luxurious gourmet kitchen with granite countertop & Frigidaire professional stainless-steel appliances. Open plan in main living area has inviting family room & dining room, with vaulted ceilings. Spacious 2 bedrooms on the main floor, including the Master bedroom with stunning spa-inspired ensuite, with abundant amounts of natural light. The lower level walkout has an additional three large bedrooms, fireplace, 9 ft ceilings, wet bar/summer kitchen area (microwave, sink, island & cabinets), rec room/home gym area and tons of storage space. Find total privacy in the meticulously maintained pool-sized backyard, surrounded by mature evergreens & cedars. Relax with great views of downtown Kelowna and a peek of the lake from your large covered deck with ceiling fan, power awning with remote & roller shades + glass railings providing an expansive feeling to the back yard. Separate covered patio off the lower level if you prefer cooler temperatures for dining outside. This home suits multiple genera...



**RE/MAX Kelowna**  
100-1553 Harvey Avenue  
Kelowna, BC,  
Canada

**Tamara Terlesky**

RE/MAX Kelowna

Phone: (250) 212-5115

<http://terlesky.com/>

