



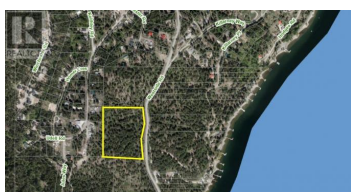
REALTOR®



9200 Westside Road Vernon British Columbia

Fintry

\$415,000



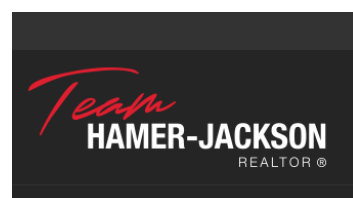
PANORAMIC LAKE View acreage with EASY ACCESS to Westside & GENTLE SLOPES for easy build & able to make full use of all land. Bring all your ideas, zoning now includes a Secondary Suite up to 1076 sq ft within any home. RU2 zoning allows winery, cidery, agriculture, Accessory Home, Stables, Greenhouses etc. Just South of Killiney Beach with beautiful public beach, boat launch, community hall. Westshore Park 5 minutes North. 5 minutes drive from Fintry Provincial Park & campground. Food, drinks, groceries & entertainment at nearby La Casa Resort. Pizza, Ice Cream etc at nearby Westshore general Store. Grocery Delivery available from Save-On-Foods & Superstore. Burned trees removed. (id:6769)

Maurice Greenwood

Coldwell Banker Executives Realty

Phone: (250) 308-5224

<http://www.mproproperties.com/>



RE/MAX Kelowna
100-1553 Harvey Avenue
Kelowna, BC,
Canada