



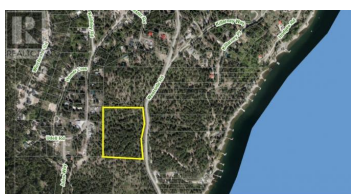
REALTOR®



9200 Westside Road Vernon British Columbia

Fintry

\$399,900



PANORAMIC LAKE View acreage with EASY ACCESS to Westside Road & mostly GENTLE SLOPES for easy build & able to make full use of all land. Bring all your ideas, zoning now includes a Secondary Suite up to 1076 sq ft within any home. RU2 zoning allows Winery, Cidery, Agriculture, Accessory Home, Stables, Greenhouses etc. Two previous wells marked, one shows above aquifer on GIS mapping. Just South of Killiney Beach with beautiful public beach, boat launch, community hall. Westshore Park 5 minutes North. 5 minutes drive from Fintry Provincial Park & campground. Food, drinks, groceries & entertainment at nearby La Casa Resort. Grocery Delivery available from Save-On-Foods. Burned trees removed. (id:6769)

Maurice Greenwood

Coldwell Banker Executives Realty

Phone: (250) 308-5224

<http://www.mproproperties.com/>



RE/MAX Kelowna
100-1553 Harvey Avenue
Kelowna, BC,
Canada