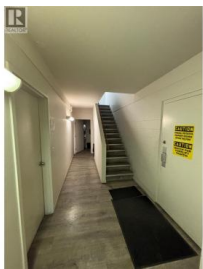




## 921 & 1021 Waddington Drive Vernon British Columbia

Middleton Mountain Vernon

**\$14**



For Lease - 4,384 SQFT Office & Warehouse Space 921 & 1021 Waddington Drive | Zoned Light Industrial | Available Immediately Now available for lease, this versatile 4,384 square foot property is split between two separate units and offers a flexible solution for a wide range of business needs. Located in a Light Industrial zone. 921 Waddington Drive features an open warehouse layout with a small private yard area, perfectly suited for storage, light manufacturing, or trades. Just next door, 1021 Waddington Drive provides open office space across two floors, offering a clean and professional setting with plenty of onsite parking for staff and visitors. These two units can be leased together as a combined space or separately, depending on your operational needs. The property is available immediately, presenting a great opportunity for businesses looking to establish or expand their presence in a flexible and well-located space. (id:6769)

### Jason Wills

Venture Realty Corp.

Phone: (250) 300-5477

<http://www.venturecommercial.ca/>



RE/MAX Kelowna  
100-1553 Harvey Avenue  
Kelowna, BC,  
Canada