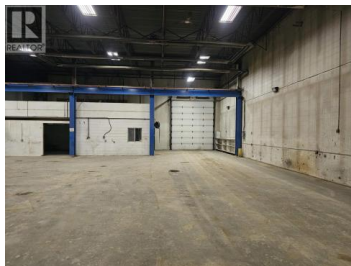
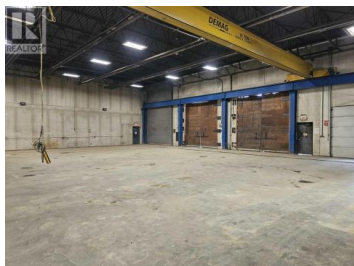
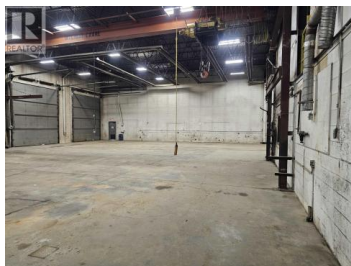


9452 MILWAUKEE Way Prince George British Columbia

\$19



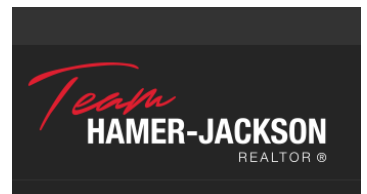
7991 Sq ft warehouse with nice office space up front. Has a large fully fenced yard. Excellent access off of Milwaukee Way into the yard and the paved parking lot. Building has grade level doors and 18ft ceiling clearance. M2 Zoning. Total of 4 bay doors of which one is a drive thru bay. Radiant heat and floor drains. Vacant and ready to use. Monthly base rent works out to \$12,319.46 plus operating costs. *PREC - Personal Real Estate Corporation (id:6769)

Clint Dahl

Royal LePage Aspire Realty

Phone: (250) 981-2070

<http://www.clintdahl.ca/>



RE/MAX Kelowna
100-1553 Harvey Avenue
Kelowna, BC,
Canada