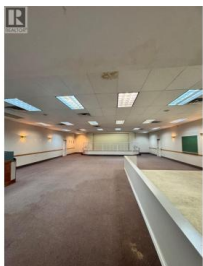




## 9512 Julia Street Summerland British Columbia

Main Town

# \$3,000



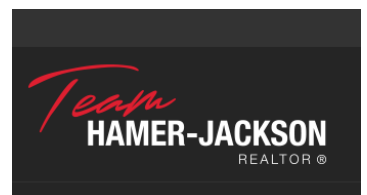
Versatile 3,500 sq.ft. commercial building available for lease at \$3,000/month, with flexible terms that can accommodate short-term use. This well-maintained property features a large open-concept main floor (approx. 2,720 sq.ft.), offering excellent adaptability for a wide range of uses. Currently zoned Institutional, the property allows for uses such as child care, education, recreation, place of worship, and cultural facilities, with the owner open to assisting with rezoning for additional uses, including medical or similar applications. The layout includes a welcoming foyer with reception area, separate men's and women's washrooms, and a generous coat/storage space. The basement level provides additional rooms suitable for offices, meeting rooms, boardrooms, or storage. The property also offers ample on-site parking, with a dedicated parking lot and additional stalls alongside the building. An excellent opportunity for businesses or organizations seeking flexible space, strong parking, and adaptable lease terms. (id:6769)

### Amar Kahlon

RE/MAX Penticton Realty

Phone: (250) 486-3100

<http://www.teamkahlongroup.com/>



RE/MAX Kelowna  
100-1553 Harvey Avenue  
Kelowna, BC,  
Canada