



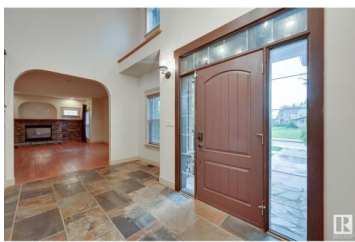
Edmonton Alberta

Crestwood

\$1,698,000



You will LOVE this gorgeous Craftsman style 2 sty /close to 5000 sf living space. Nestled on a tree lined street in EAST Crestwood, a stones throw from the river valley along Summit & Riverside Drive. Just repainted, this timeless home boasts quality finishes throughout. Main floor den & a massive great rm next to the formal dining area, perfect for those who love to entertain. Parties & family gatherings will gravitate to the Chef's kitchen featuring a huge island for a quick bite & prepping meals. Huge laundry/mudroom. 2 O/S bedrms for the kids, bonus rm & a wonderful retreat for the parents in the primary bedrm. Lower level is where the real fun happens w/a TV gaming area & wet bar. Exercise area for the hard core fitness buff, 2 bedrms & in floor heat. Private .23 acre mature treed yard for outdoor lovers- massive deck for chilling & BBQs. Lower fire pit patio. 2 huge driveways to park extra cars, doubles for hoops/hockey. 5 car tandem garage w/a 3 season loft, perfect studio or guy/gal cave. A GEM! (id:6769)



Alan H. Gee

RE/MAX Elite

Phone: (780) 498-2187

<http://www.alangee.com/>



RE/MAX Kelowna
100-1553 Harvey Avenue
Kelowna, BC,
Canada