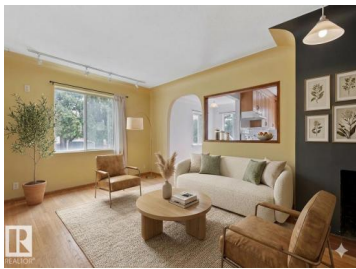


## Edmonton Alberta

Hazeldean

**\$445,888**



Discover Character and Charm in This Peaceful Tree Lined Neighbourhood! Welcome to this beautiful character home nestled on a quiet, mature tree lined street that residents treasure. This raised bungalow features original hardwood floors and a thoughtful layout perfect for families seeking tranquility. The main floor showcases open concept living with a dining area, elegant coved ceilings, and charming archways. A bright south facing kitchen flows seamlessly into spacious main floor bedrooms, a 4 piece bathroom completes the upper level. The basement offers a beautifully updated double shower for modern comfort. Step outside to a private fenced yard with a generous covered deck ideal for the garden lover. A heated garage offers year round convenience and storage. Location is everything! This home backs directly onto a lush greenbelt with walking trails, steps away from the beloved Mill Creek Ravine. Close to excellent schools, parks, and local shopping. This is a must-see gem! Photos virtually staged. (id:6769)

**Erick S. Yip**

RE/MAX Elite

Phone: (780) 619-6197

<https://erickyip.com/>



RE/MAX Kelowna  
100-1553 Harvey Avenue  
Kelowna, BC,  
Canada